



Perfect Wireless Experience
完美无线体验

FIBOCOM MA510-GL Modem Log

User Instruction

Version: V1.0.0

Date: 2019-08-30



Applicability type

No.	Product model	Description
1	MA510-GL	MA510_GL Modem Log User Instruction_V1.0.0

Draft

Copyright

Copyright ©2019 Fibocom Wireless Inc. All rights reserved.

Without the prior written permission of the copyright holder, any company or individual is prohibited to excerpt, copy any part of or the entire document, or transmit the document in any form.

Notice

The document is subject to update from time to time owing to the product version upgrade or other reasons. Unless otherwise specified, the document only serves as the user guide. All the statements, information and suggestions contained in the document do not constitute any explicit or implicit guarantee.

Trademark



The trademark is registered and owned by Fibocom Wireless Inc.

Versions


Version	Author	Assessor	Approver	Update Date	Description
V1.0.0	Zhang Pei	Zhu Gang	Xie Xiangcun	2019-08-30	initial version

Contents

1	Install QXDM tool.....	5
2	Configure QXDM.....	5
3	Load *.QCR4 File	6
4	Connect the qxdm	6
5	Exception handle.....	7
6	Gps ,NB dmc config	7

Draft

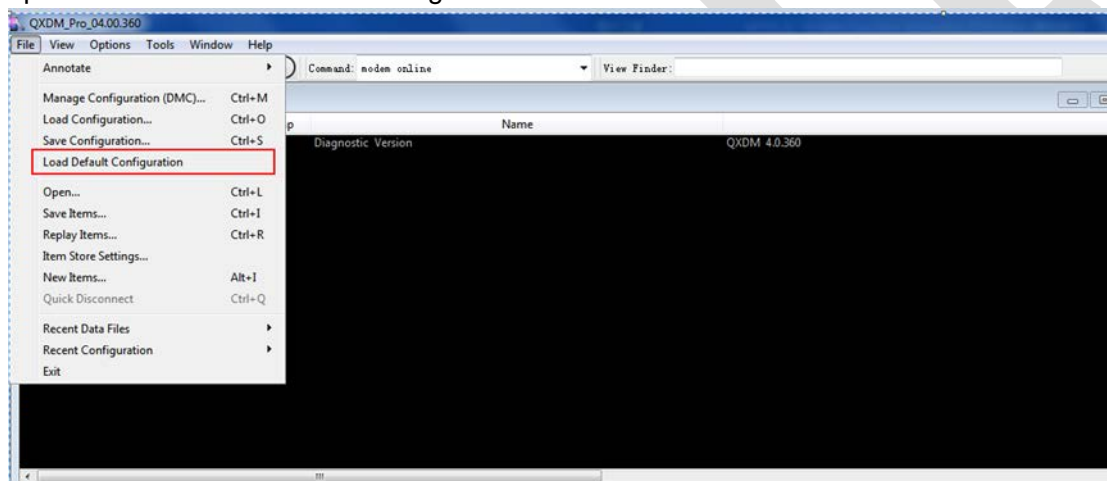
1 Install QXDM tool

Name	Date modified	Type	Size
 QXDM.4.0.360.00.Wind...	2019-08-30 3:34 PM	Application	175,436 KB

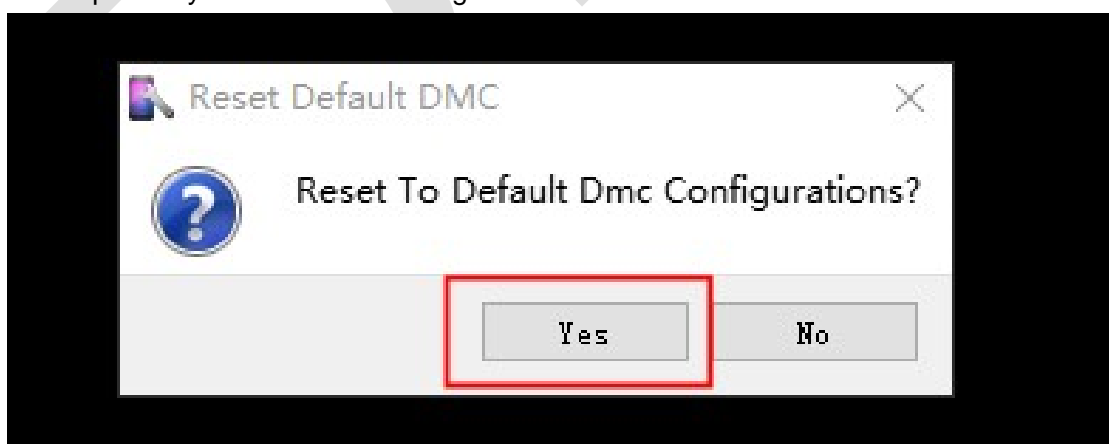
NOTE: Must use 4.360 and the recent version.

2 Configure QXDM

First step open “File”--->”Load Default Configuration.

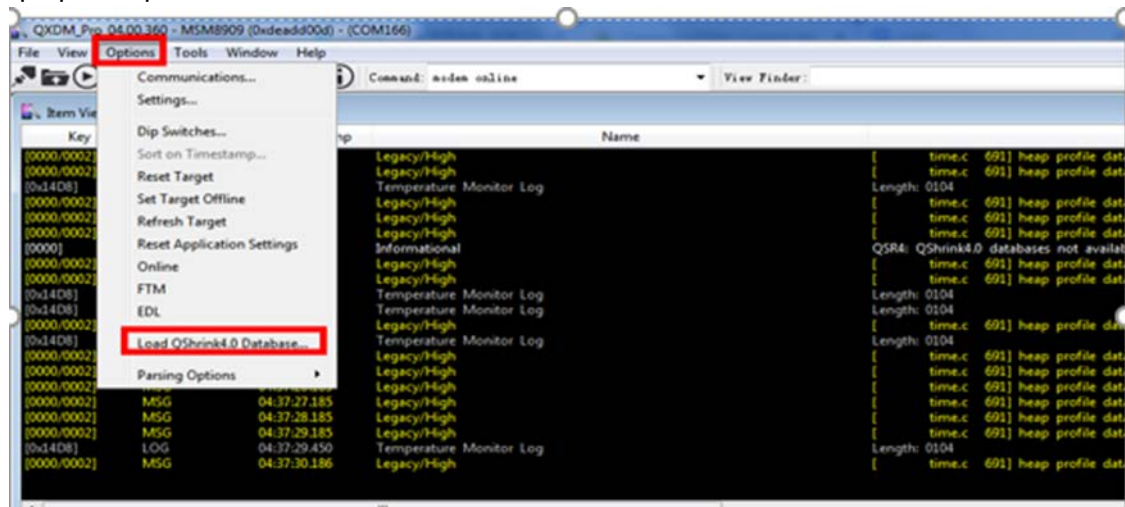


Second step click “yes” to save the configuration.



3 Load *.QCR4 File

First step open "Options"--->"Load QShrink4.0 Database "



Second step select the *.qsr4 file

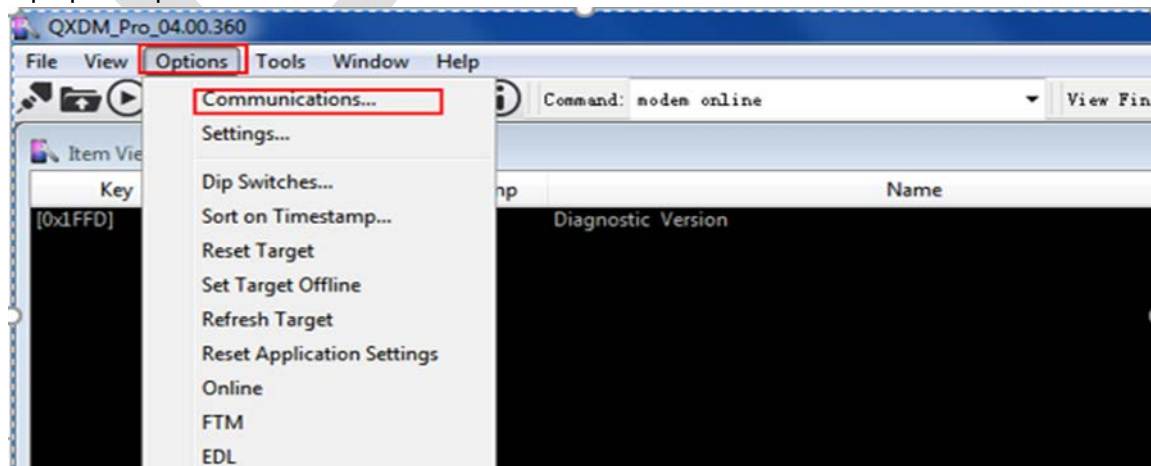
Name	Date modified	Type	Size
msg_hash_2c024eef-54f4-0aaf-fa82-940e8ad4c39f.qsr4	2019-08-27 5:13 PM	QSR4 File	6,793 KB
msg_hash_fde3ad14-4597-506b-db35-56c589b7e078.qsr4	2019-08-27 4:59 PM	QSR4 File	621 KB

Note:

The software version must use the corresponding *.QCR4 file. *.QCR4 will be released with the software .

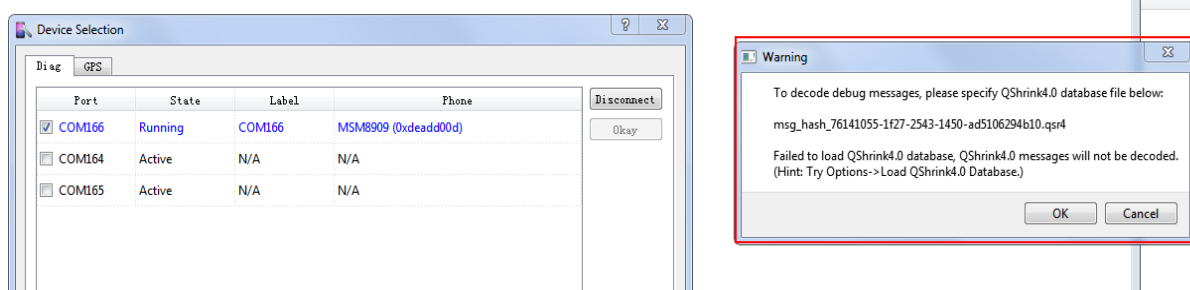
4 Connect the qxdm

First step open "Options"--->"Communications"



5 Exception handle

If we click connect, the following dialog box will pop up, we must repeat step 3, load t*.qcr4 file



6 Gps ,NB dmc config

